

Timber

COLLECTION

TTOTALLY

ENTERPRISES, LLC

totallycarpet.com

888.882.1500



Timber
Sycamore 1027-A2303
Tile + Monolithic

TTOTALLY
ENTERPRISES, LLC
totallycarpet.com
888.882.1500

Timber
Sycamore 1027-A2303
Tile + Ashlar

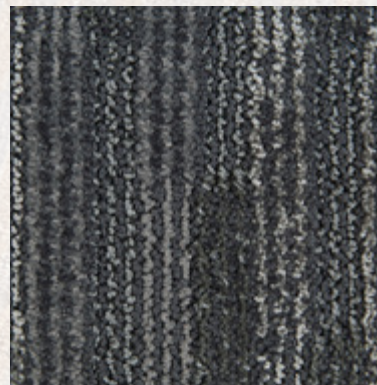


TTOTALLY
ENTERPRISES, LLC
totallycarpet.com
888.882.1500



Timber
Sycamore 1028-A2303
Tile + Quarter Turned

TOTALLY
ENTERPRISES, LLC
totallycarpet.com
888.882.1500

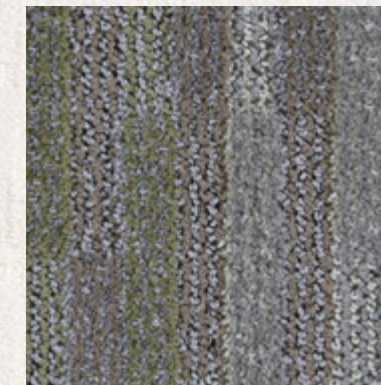


XP

CEDAR
1027-C1104



SPRUCE
1027-C3795



ASPEN
1027-C5695

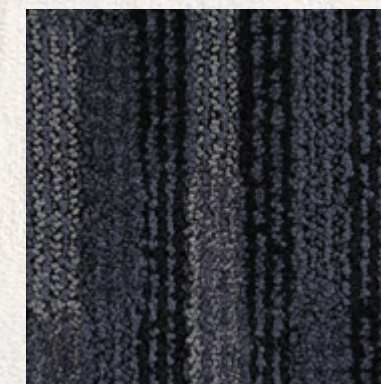


MAPLE
1027-F2870



XP

SEQUOIA
1027-B0341



BLACK WALNUT
1027-G0433

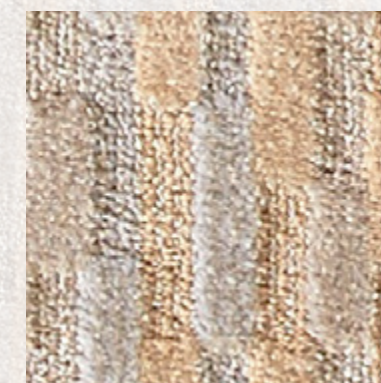


ENGLISH OAK
1027-A1412



XP

MAGNOLIA
1027-B0319



XP

SYCAMORE
1027-A2303

XP Indicates Quickship Colors

Style Name	Timber
Style Number	1027
Pattern Repeat	7.2" W x 16.7" L
Tufted Yarn Weight	35 oz
Gauge	1/10
Construction	Tip-Sheared Enhanced Loop
Face Yarn	100% Solution-Dyed Nylon
Yarn Spec	Twisted & Heatset for High Performance
Tufts per Sq. Inch	150 (Gauge x Stitch Rate x Tufts/Stitch)
Pile Height	0.187
Primary Backing	4 oz Woven Polypropylene
Secondary Backing	High Performance Backing System with 18x5 Lino ActionBac
Tile Backing	Vinyl composite with recycled content
Width Broadloom	12'
Tile Size	24" x 24"
Post Installation Protection	Plastic Protection Is Prohibited. It causes discoloration and accelerated soiling. Craft paper, corrugated box material or masonite are recommended.
Treatments	Commercial carpet soil protection & static control
Broadloom Adhesive	Totally Premium Broadloom Adhesive
Tile Adhesive	Totally Premium Tile Adhesive
Flammability	Passes Class 1 (ASTM E-648)
Electrostatic Propensity	Passes AATCC - 134 @ 3.5 KV or less
Dye Lot Size	Unlimited
Custom Colors & Weight	Please Inquire
Origin	Made in USA
LEED	Contributes to Leed Credits
CRI	Green Label Plus
Warranty	Tile: limited lifetime warranty. Broadloom: 10 year limited warranty