



# Strident

## COLLECTION

STRIDENT  
STRIDENT LOOP  
MULTI-STRIDENT  
MULTI-STRIDENT LOOP

# TOTALLY

ENTERPRISES, LLC

[totallycarpet.com](http://totallycarpet.com)

888.882.1500

**Multi-Strident Loop**  
Franklin / Lincoln 1012-D1109  
**Broadloom**

**TOTALLY**  
ENTERPRISES, LLC  
totallycarpet.com  
888.882.1500



**Multi-Strident**  
Franklin / Lincoln 1013-D1109  
**Broadloom**

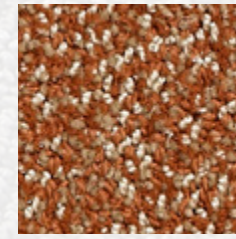
**TOTALLY**  
ENTERPRISES, LLC  
totallycarpet.com  
888.882.1500



EINSTEIN  
-B0319



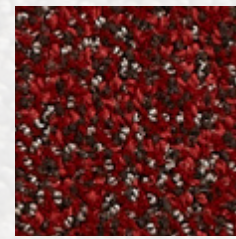
CHURCHILL  
-A2303



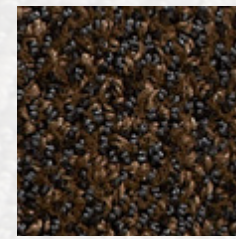
SHAKESPEARE  
-F2870



THOMAS  
JEFFERSON  
-C3195



DA VINCI  
-C3807



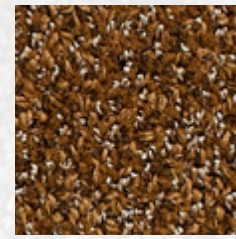
MOZART  
-C2333



KRAUTHAMMER  
-B0320



BEETHOVEN  
-B0341



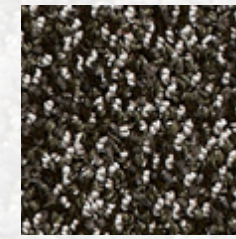
PICASSO  
-A1412



ARISTOTLE  
-C5695



EDISON  
-A1312



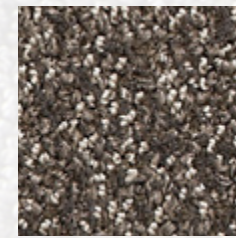
REMBRANDT  
-C6795



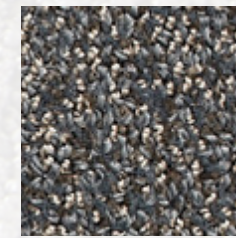
SOCRATES  
-A4003



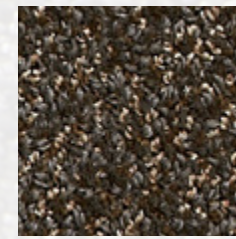
BENJAMIN  
FRANKLIN  
-B0311



LINCOLN  
-F0995



MICHELANGELO  
-C3795



SIR ISAAC  
NEWTON  
-A9712




BACH  
-B1116

# TOTALLY

ENTERPRISES, LLC

[totallycarpet.com](http://totallycarpet.com)

888.882.1500

 indicates Quickship colors

<b>Style Name</b>	<b>Strident</b>	<b>Strident Loop</b>	<b>Multi-Strident</b>	<b>Multi-Strident Loop</b>
Style Number	1033	1034	1013	1012
Pattern Repeat	9.6W" X 38.5" L	9.6W" X 38.5" L	9.6W" X 38.5" L	9.6W" X 38.5" L
Tufted Yarn Weight	46 oz	46 oz	46 oz	46 oz
Gauge	1/10	1/10	1/10	1/10
Construction	Tip Sheared	Loop	Tip Sheared	Loop
Face Yarn	100% Solution Dyed Nylon			
Yarn Spec	"Cortex" (Patent Pending) Twisted & Heatset For High Performance			
Tufts/sq in.	220 (Gauge x Stitch Rate x Tufts/Stitch)			
Pile Height	0.187	0.218	0.187	0.218
Primary Backing	4 oz Woven Polypropylene			
Secondary Backing	High Performance Backing System with 18x5 Lino ActionBac			
Tile Backing	Vinyl composite with recycled content			
Width Broadloom	12'	12'	12'	12'
Tile Size	24" x 24"	Not Available	24" x 24"	Not Available
Treatments	Commercial carpet soil protection & static control			
Post Installation Protection	Plastic protection is prohibited. It causes discoloration and accelerated soiling. Craft paper, corrugated box material or masonite are recommended.			
Recommended Adhesive Broadloom	Totally Premium Broadloom Adhesive			
Recommended Adhesive Tile	Totally Premium Tile Adhesive			
Flammability	Passes Class 1 (ASTM E-648)			
Electrostatic Propensity	Passes AATCC - 134 @ 3.5 KV or less			
Dye Lot Size	Unlimited			
Custom Colors & Weight	Please Inquire			
Origin	Made in USA			
LEED	Contributes to Leed Credits			
CRI	Green Label Plus			
Warranty	Tile: limited lifetime warranty. Broadloom: 10 year limited warranty			