



# Matte Herringbone

COLLECTION

**T**TOTALLY  
ENTERPRISES, LLC







# Matte Herringbone

Style Number .....	1025
Pattern Repeat .....	6"W x 0.1"L
Tufted Yarn Weight .....	52 oz.
Gauge .....	1/10
Construction .....	Shear
Face Yarn .....	100% Solution Dyed Nylon
Yarn Spec .....	Cortex™ Twisted & Heatset for High Performance.
Tufts per Sq. Inch .....	240 (Gauge x Stitch Rate x Tufts/Stitch)
Pile Height .....	0.218
Primary Backing .....	4 oz Woven Polypropylene
Secondary Backing .....	High Performance Backing System with 18x5 Lino ActionBac
Tile Backing .....	Vinyl composite with recycled content
Width Broadloom.....	12'

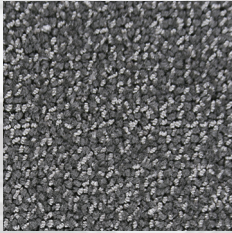




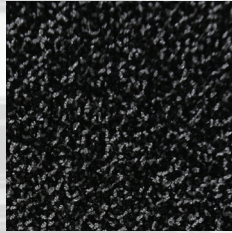
**XP** 1025-C9795 Boardroom

Tile Size .....	24" x 24"
Treatments .....	Commercial carpet soil & static control
Post Installation Protection .....	Plastic protection is prohibited. It causes discoloration and accelerated soiling. Craft paper, corrugated box material or masonite are recommended.
Broadloom Adhesive.....	Totally Premium Broadloom Adhesive
Tile Adhesive.....	Totally Premium Tile Adhesive
Flammability.....	Passes Class 1 (ASTM E-648)
Electrostatic Propensity .....	Passes AATCC - 134 @ 3.5 KV or less
Dye Lot Size .....	Unlimited
Custom Color & Weight .....	Please Inquire
Origin .....	Made in USA
LEED .....	Contributes to Leed Credits
CRI .....	Green Label Plus
Warranty .....	Tile: Limited lifetime warranty    Broadloom: 10 year limited warranty

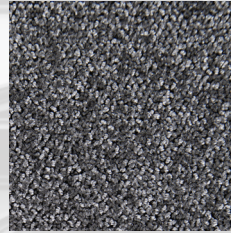




BOARDROOM  
-C9795



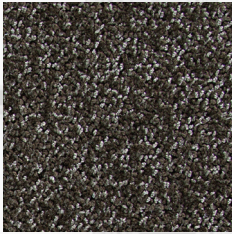
GALLERY  
-B1116



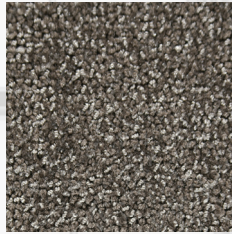
CORRIDOR  
-C1195



RECEPTION  
AREA  
-B0311



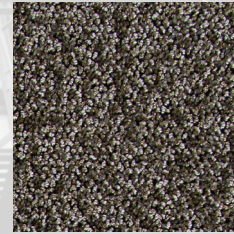
MEZZANINE  
-A2011



LOFT  
-C2695



OFFICE  
-A4003



VESTIBULE  
-C1295



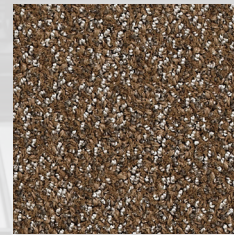
TERRACE  
-C2295



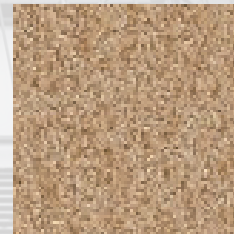
ATRIUM  
-B0320



STAIRCASE  
-C2333



AUDITORIUM  
-C3195



BREEZEWAY  
-B0319



indicates Quickship colors



**T**TOTALLY

ENTERPRISES, LLC

[totallycarpet.com](http://totallycarpet.com)

888.882.1500