



Knit
COLLECTION

T**TOTALLY**
ENTERPRISES, LLC







Knit

Style Number	1015
Pattern Repeat	4"W x .57"L
Tufted Yarn Weight	32 oz.
Gauge	1/10
Construction	Loop
Face Yarn	100% Solution Dyed Nylon
Yarn Spec	Cortex™ Twisted & Heatset for High Performance.
Tufts per Sq. Inch	140 (Gauge x Stitch Rate x Tufts/Stitch)
Pile Height	0.125
Primary Backing	4 oz Woven Polypropylene
Secondary Backing	High Performance Backing System with 18x5 Lino ActionBac
Treatments	Commercial carpet soil protection & static control
Width Broadloom	12'

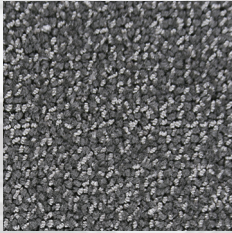




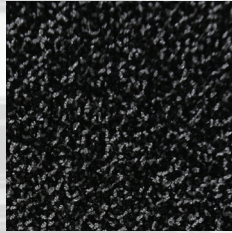
XP 1015-C9795 Boardroom

Post Installation Protection	Plastic protection is prohibited. It causes discoloration and accelerated soiling. Craft paper, corrugated box material or masonite are recommended.
Broadloom Adhesive	Totally Premium Broadloom Adhesive
Flammability.....	Passes Class 1 (ASTM E-648)
Electrostatic Propensity	Passes AATCC - 134 @ 3.5 KV or less
Dye Lot Size	Unlimited
Custom Colors & Weight	Please Inquire
Origin	Made in USA
LEED	Contributes to Leed Credits
CRI	Green Label Plus
Warranty.....	Broadloom: 10 year limited warranty

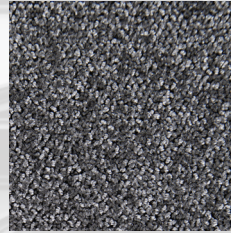




BOARDROOM
-C9795



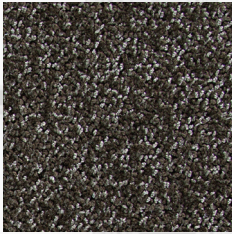
GALLERY
-B1116



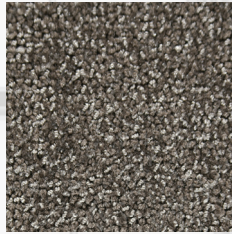
CORRIDOR
-C1195



RECEPTION
AREA
-B0311



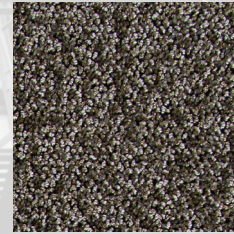
MEZZANINE
-A2011



LOFT
-C2695



OFFICE
-A4003



VESTIBULE
-C1295



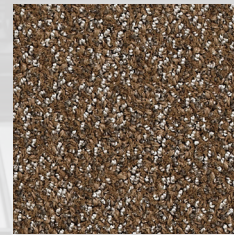
TERRACE
-C2295



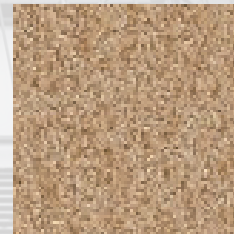
ATRIUM
-B0320



STAIRCASE
-C2333



AUDITORIUM
-C3195



BREEZEWAY
-B0319



indicates Quickship colors



TTOTALLY

ENTERPRISES, LLC

totallycarpet.com

888.882.1500