



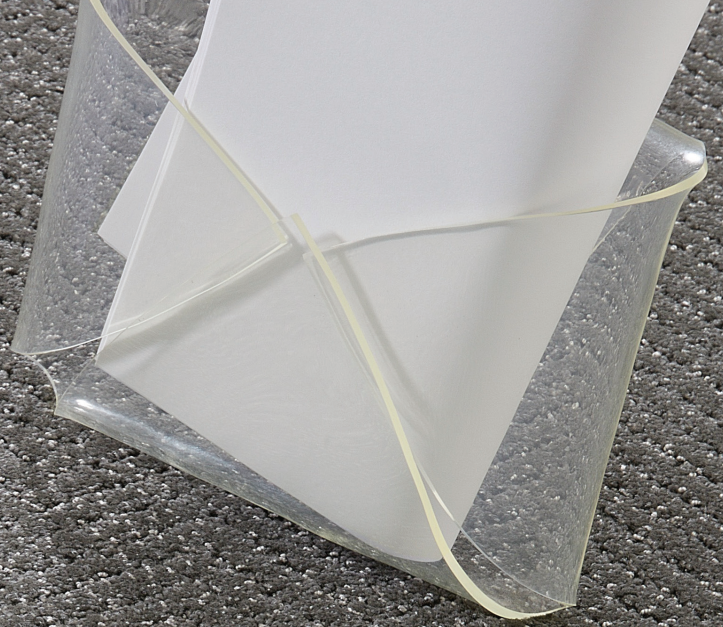
Fine Herringbone

COLLECTION

TTOTALLY
ENTERPRISES, LLC







Fine Herringbone

Style Number 1026
Pattern Repeat 4"W x .67"L
Tufted Yarn Weight 53 oz.
Gauge 1/10
Construction Shear
Face Yarn 100% Solution Dyed Nylon
Yarn Spec Cortex™ Twisted & Heatset for High Performance.
Tufts per Sq. Inch 240 (Gauge x Stitch Rate x Tufts/Stitch)
Pile Height 0.187
Primary Backing 4 oz Woven Polypropylene
Secondary Backing High Performance Backing System with 18x5 Lino ActionBac
Tile Backing Vinyl composite with recycled content
Width Broadloom..... 12'

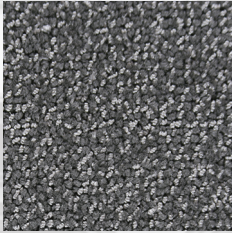




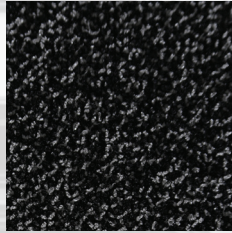
XP 1026-C9795 Boardroom

Tile Size	24" x 24"
Treatments	Commercial carpet soil & static control
Post Installation Protection	Plastic protection is prohibited. It causes discoloration and accelerated soiling. Craft paper, corrugated box material or masonite are recommended.
Broadloom Adhesive.....	Totally Premium Broadloom Adhesive
Tile Adhesive.....	Totally Premium Tile Adhesive
Flammability.....	Passes Class 1 (ASTM E-648)
Electrostatic Propensity	Passes AATCC - 134 @ 3.5 KV or less
Dye Lot Size	Unlimited
Custom Color & Weight	Please Inquire
Origin	Made in USA
LEED	Contributes to Leed Credits
CRI	Green Label Plus
Warranty.....	Tile: Limited lifetime warranty Broadloom: 10 year limited warranty

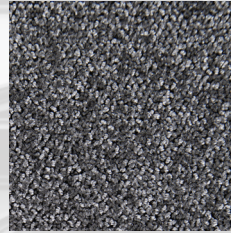




BOARDROOM
-C9795



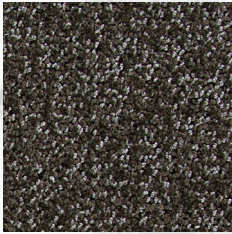
GALLERY
-B1116



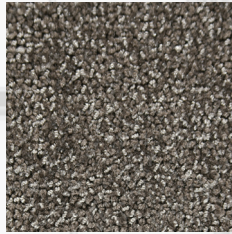
CORRIDOR
-C1195



RECEPTION
AREA
-B0311



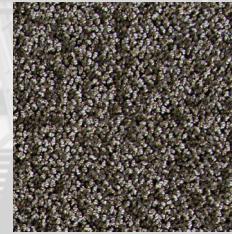
MEZZANINE
-A2011



LOFT
-C2695



OFFICE
-A4003



VESTIBULE
-C1295



TERRACE
-C2295



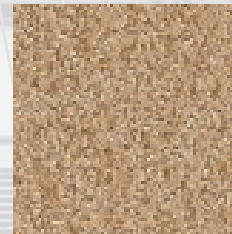
ATRIUM
-B0320



STAIRCASE
-C2333



AUDITORIUM
-C3195



BREEZEWAY
-B0319



indicates Quickship colors



TTOTALLY

ENTERPRISES, LLC

totallycarpet.com

888.882.1500