

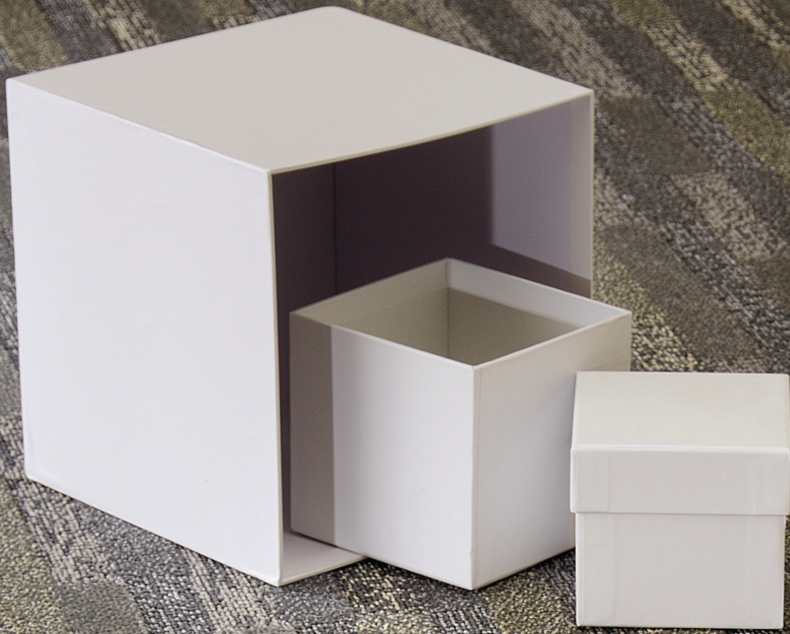


Boards
COLLECTION

T**TOTALLY**
ENTERPRISES, LLC



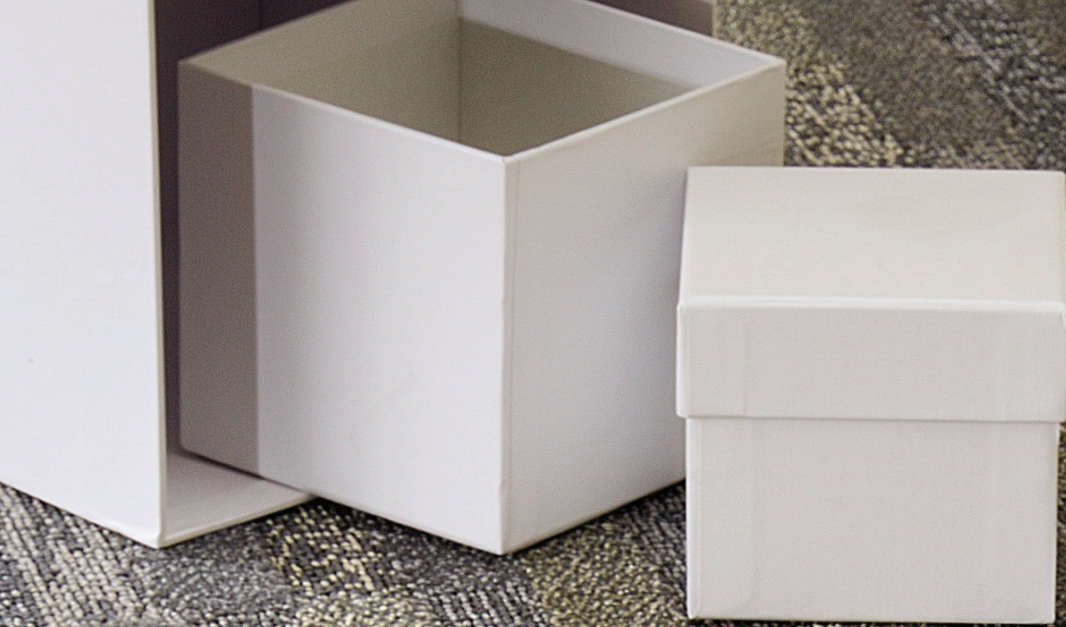




Boards

Style Number	1023
Pattern Repeat	14.4" W x 29" L
Tufted Yarn Weight	43 oz
Gauge	1/10
Construction	Tip Sheared Enhanced Loop
Face Yarn	100% Solution Dyed Nylon
Yarn Spec	Cortex™ Twisted & Heatset for High Performance.
Pile Height	0.125
Primary Backing	4 oz Woven Polypropylene
Secondary Backing	High Performance Backing System with 18x5 Lino ActionBac
Tile Backing	Vinyl composite with recycled content
Width Broadloom	12'
Tile Size	24" x 24"

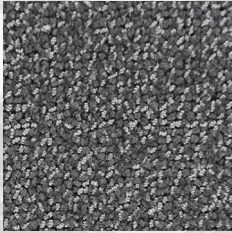




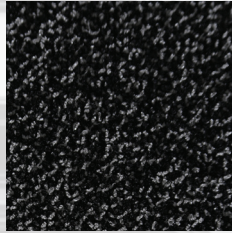
XP 1023-C9795 Boardroom

- Post Installation Protection Plastic protection is prohibited. It causes discoloration and accelerated soiling. Craft paper, corrugated box material or masonite are recommended.
- Broadloom Adhesive..... Totally Premium Broadloom Adhesive
- Tile Adhesive..... Totally Premium Tile Adhesive
- Flammability..... Passes Class 1 (ASTM E-648)
- Electrostatic Propensity Passes AATCC - 134 @ 3.5 KV or less
- Dye Lot Size Unlimited
- Custom Colors & Weight Please Inquire
- Origin..... Made in USA
- LEED..... Contributes to Leed Credits
- CRI..... Green Label Plus
- Warranty Tile: limited lifetime warranty Broadloom: 10-year limited warranty

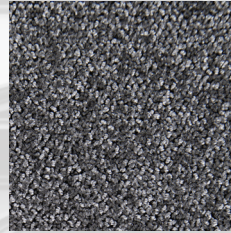




BOARDROOM
-C9795



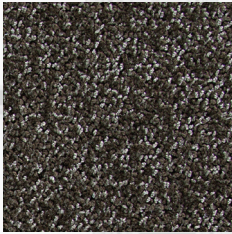
GALLERY
-B1116



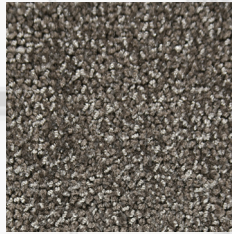
CORRIDOR
-C1195



RECEPTION
AREA
-B0311



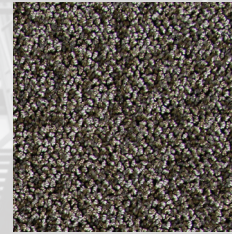
MEZZANINE
-A2011



LOFT
-C2695



OFFICE
-A4003



VESTIBULE
-C1295



TERRACE
-C2295



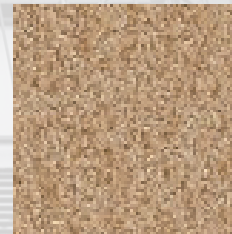
ATRIUM
-B0320



STAIRCASE
-C2333



AUDITORIUM
-C3195



BREEZEWAY
-B0319



indicates Quickship colors



TTOTALLY

ENTERPRISES, LLC

totallycarpet.com

888.882.1500