



**Bead**  
COLLECTION

**T****TOTALLY**  
ENTERPRISES, LLC









# Bead

Style Number .....	1016
Pattern Repeat .....	8"W x .72"L
Tufted Yarn Weight .....	56 oz.
Gauge .....	1/10
Construction .....	Shear
Face Yarn .....	100 % Solution Dyed Nylon
Yarn Spec .....	Cortex™ Twisted & Heatset for High Performance.
Tufts per Sq. Inch .....	200 (Gauge x Stitch Rate x Tufts/Stitch)
Pile Height .....	0.156
Primary Backing .....	4 oz Woven Polypropylene
Secondary Backing .....	High Performance Backing System with 18x5 Lino ActionBac
Width Broadloom.....	12'
Treatments .....	Commercial carpet soil & static control







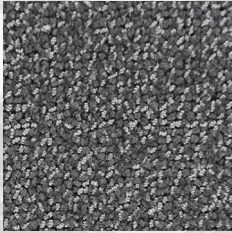
**XP** 1018-C9795 Boardroom

Post Installation Protection .....	Plastic protection is prohibited. It causes discoloration and accelerated soiling. Craft paper, corrugated box material or masonite are recommended.
Broadloom Adhesive.....	Totally Premium Broadloom Adhesive
Flammability.....	Passes Class 1 (ASTM E-648)
Electrostatic Propensity .....	Passes AATCC - 134 @ 3.5 KV or less
Dye Lot Size .....	Unlimited
Custom Color & Weight .....	Please Inquire
Origin .....	Made in USA
LEED .....	Contributes to Leed Credits
CRI .....	Green Label Plus
Warranty .....	Broadloom: 10 year limited warranty

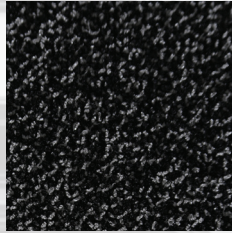




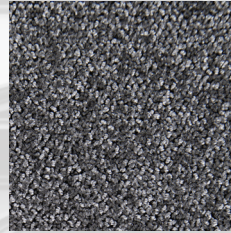




BOARDROOM  
-C9795



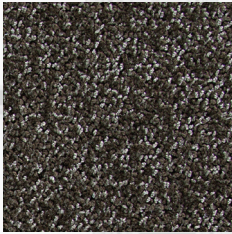
GALLERY  
-B1116



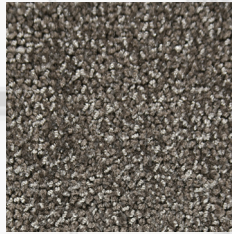
CORRIDOR  
-C1195



RECEPTION  
AREA  
-B0311



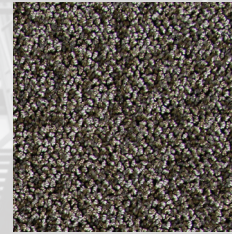
MEZZANINE  
-A2011



LOFT  
-C2695



OFFICE  
-A4003



VESTIBULE  
-C1295



TERRACE  
-C2295



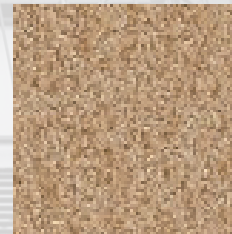
ATRIUM  
-B0320



STAIRCASE  
-C2333



AUDITORIUM  
-C3195



BREEZEWAY  
-B0319



indicates Quickship colors





**T**TOTALLY

ENTERPRISES, LLC

[totallycarpet.com](http://totallycarpet.com)

888.882.1500