



**T<sup>3</sup>**<sup>®</sup>



**Registri**  
COLLECTION

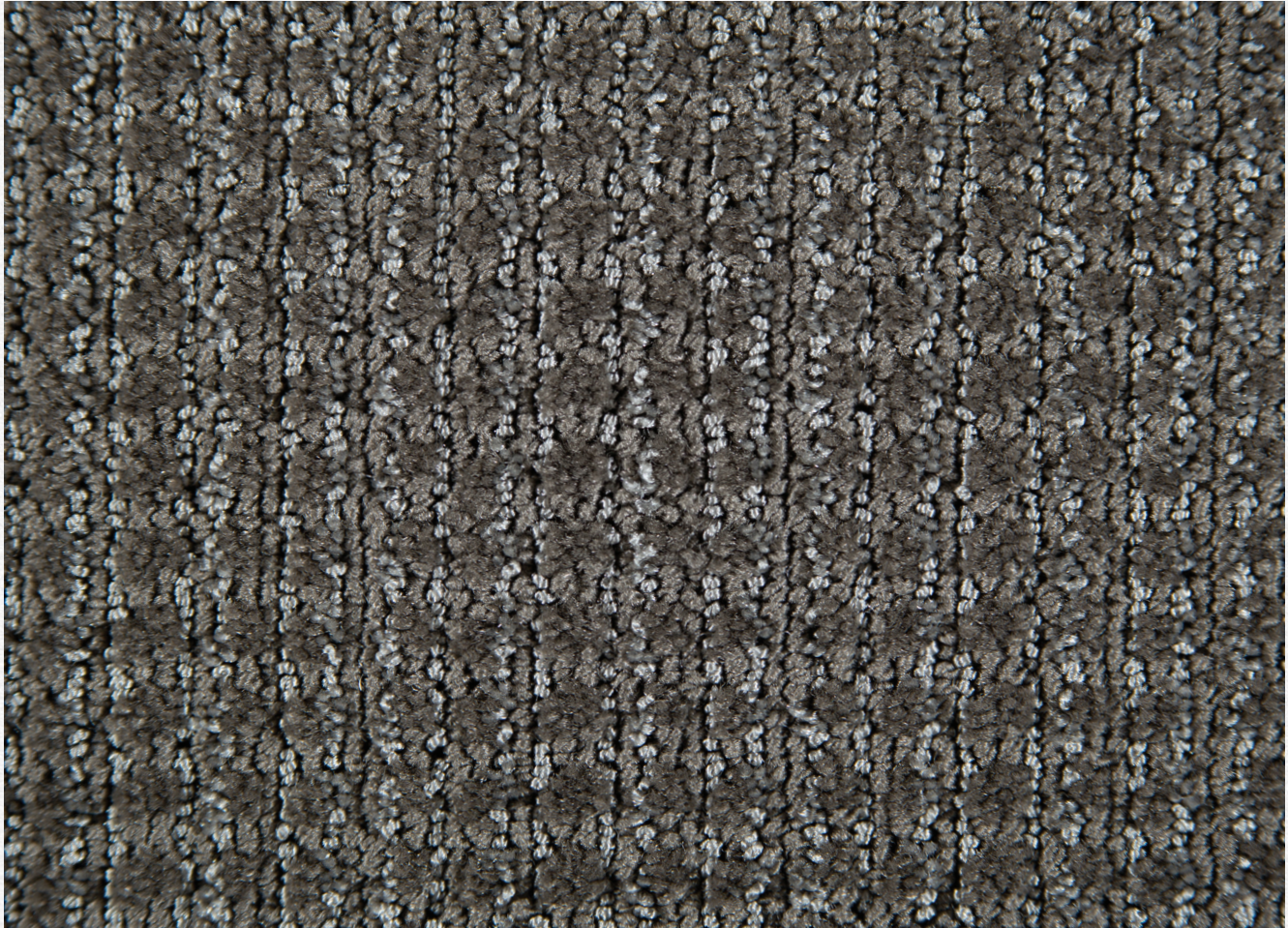
**TOTALLY**

ENTERPRISES, LLC

[totallycarpet.com](http://totallycarpet.com)

888.882.1500

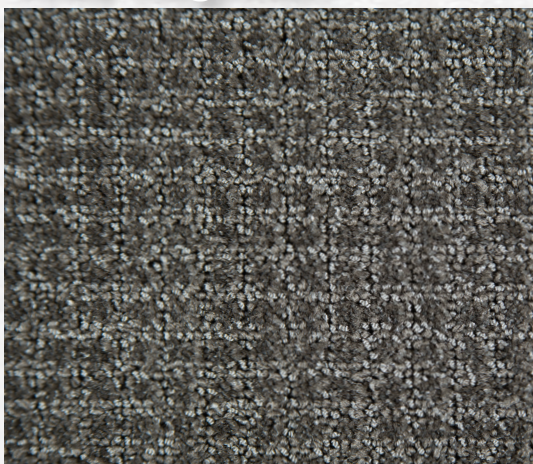
# 1029 Registri



1029-C2695 Shade



## 1002 Regimen



1002-C2695 Loft

## 1004 Stritex



1004-C2695 Loft





**T**TOTALLY

ENTERPRISES, LLC

[totallycarpet.com](http://totallycarpet.com)

888.882.1500

**T**TOTALLY

ENTERPRISES, LLC

[totallycarpet.com](http://totallycarpet.com)

888.882.1500

A close-up photograph of a light-colored, textured carpet. In the upper left corner, the black metal legs of a chair are visible, extending diagonally across the frame. The carpet has a fine, woven texture with a subtle pattern of vertical and horizontal lines.

**Registri**  
1029-C2695 Shade  
**Broadloom**



**T**TOTALLY

ENTERPRISES, LLC

[totallycarpet.com](http://totallycarpet.com)

888.882.1500



**Registri**  
1029-C2695 Shade  
**Tile + Quarter Turned**



**Registri**  
1029-C2695 Shade  
**Tile + Monolithic**





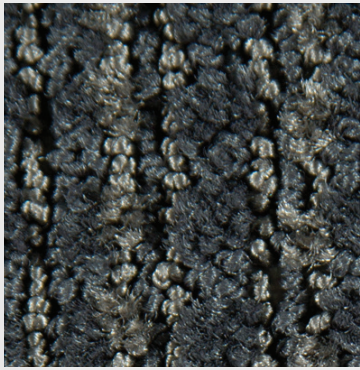
**Registri**  
1029-C2695 Shade  
**Tile + Ashlar**

**TOTALLY**

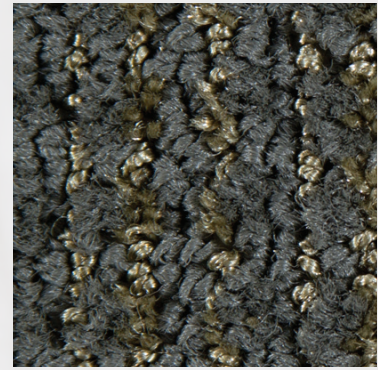
ENTERPRISES, LLC

[totallycarpet.com](http://totallycarpet.com)

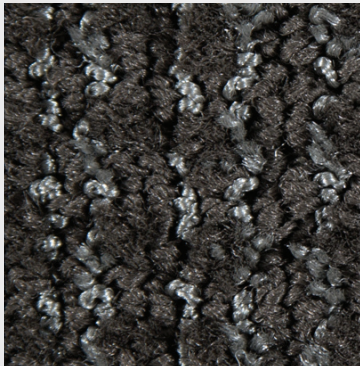
888.882.1500



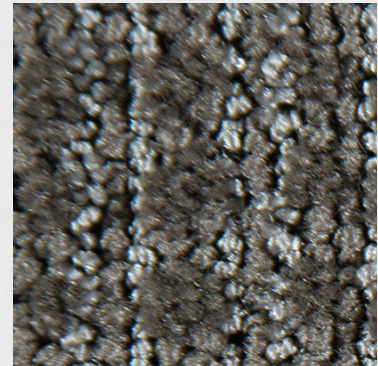
SATURATION  
XP 1029-G0407



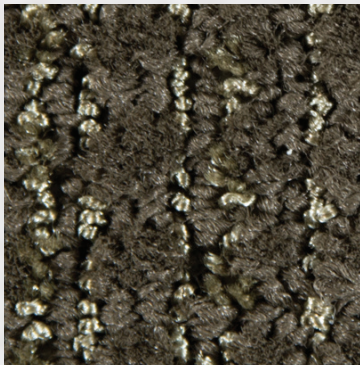
CLARITY  
XP 1029-A9712



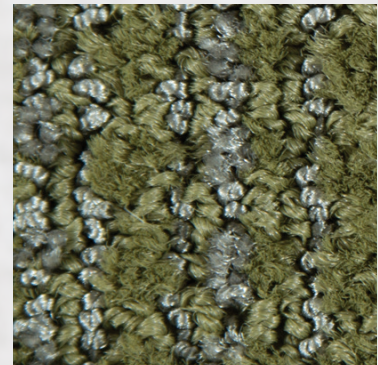
BALANCE  
1029-A2011



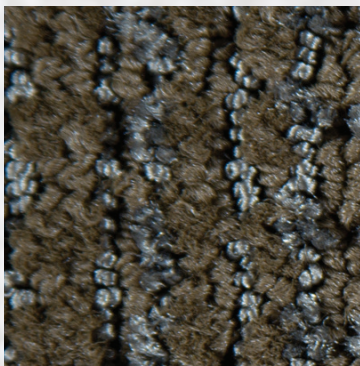
SHADE  
XP 1029-C2695



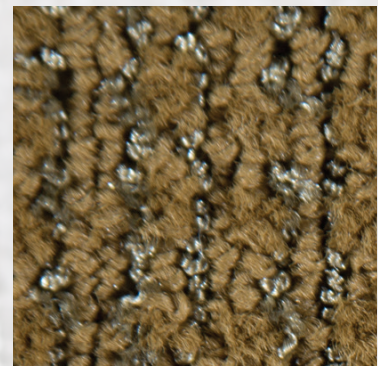
TONAL  
1029-A1312



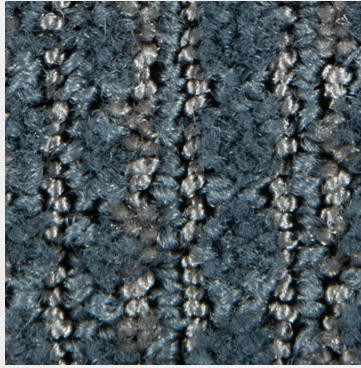
PRISMATIC  
XP 1029-C5695



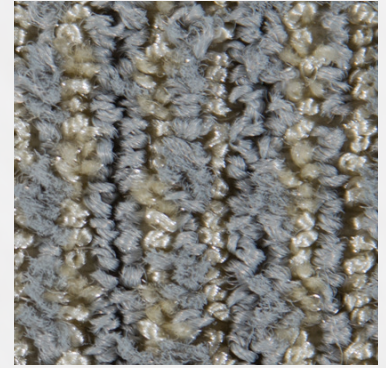
HARMONIOUS  
1029-C2307



INTENSITY  
XP 1029-A1412



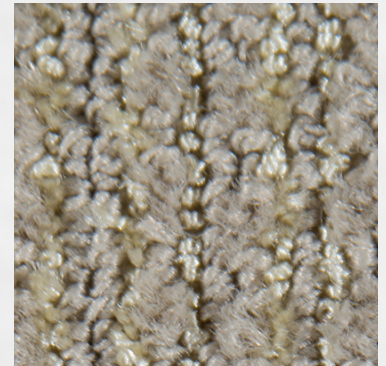
PIGMENT  
1029-C3795



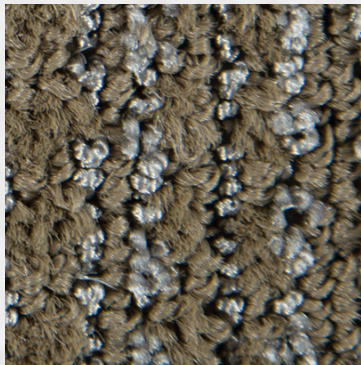
VIVID  
1029-B0311



MAGNITUDE  
**XP** 1029-F0995



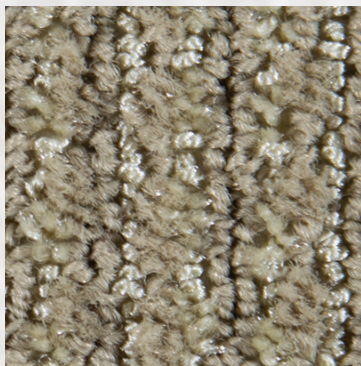
IRIDESCENT  
1029-A4003



VALUE  
1029-C3195



CONTRAST  
1029-B0341



MONOCHROMATIC  
**XP** 1029-B0320



LUMINANCE  
**XP** 1029-A2303

**XP** indicates Quickship colors

<b>Style Name</b>	Registri
<b>Style Number</b>	1029
<b>Pattern Repeat</b>	2"W x .375"L
<b>Tufted Yarn Weight</b>	32 oz
<b>Gauge</b>	1/10
<b>Construction</b>	Shear
<b>Face Yarn</b>	100% Solution Dyed Nylon
<b>Yarn Spec</b>	Twisted & Heatset for High Performance
<b>Tufts per Sq. Inch</b>	160 (Gauge x Stitch Rate x Tufts/Stitch)
<b>Pile Height</b>	0.125
<b>Primary Backing</b>	4 oz Woven Polypropylene
<b>Secondary Backing</b>	High Performance Backing System with 18x5 Lino ActionBac
<b>Tile Backing</b>	Vinyl composite with recycled content
<b>Width Broadloom</b>	12'
<b>Tile Size</b>	24" x 24" and 18" x 36"
<b>Treatments</b>	Commercial carpet soil & static control
<b>Post Installation Protection</b>	Plastic protection is prohibited. It causes discoloration and accelerated soiling. Craft paper, corrugated box material or masonite are recommended.
<b>Broadloom Adhesive</b>	Totally Premium Broadloom Adhesive
<b>Tile Adhesive</b>	Totally Premium Tile Adhesive
<b>Flammability</b>	Passes Class 1 (ASTM E-648)
<b>Electrostatic Propensity</b>	Passes AATCC - 134 @ 3.5 KV or less
<b>Dye Lot Size</b>	Unlimited
<b>Custom Color &amp; Weight</b>	Please Inquire
<b>Origin</b>	Made in USA
<b>LEED</b>	Contributes to Leed Credits
<b>CRI</b>	Green Label Plus
<b>Warranty</b>	Tile: Limited lifetime warranty Broadloom: 10 year limited warranty